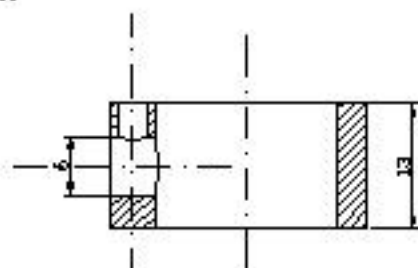
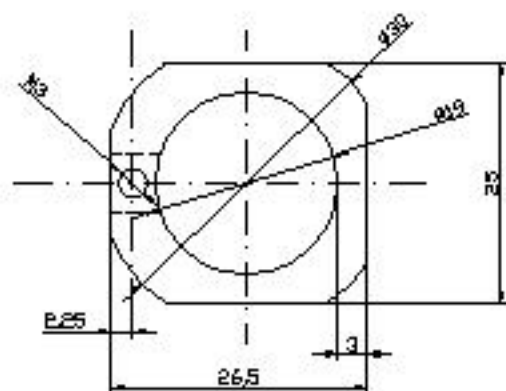
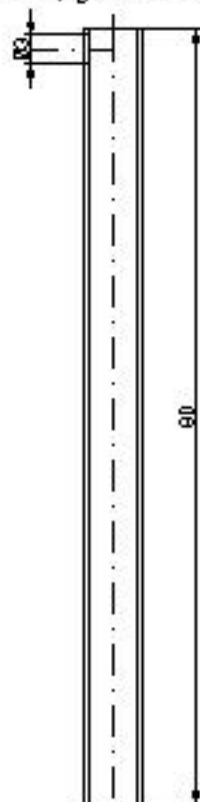


005

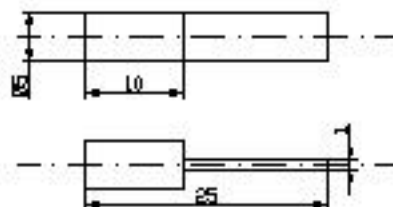


006

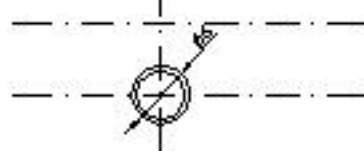
ankleben, gewalzen bohren



007

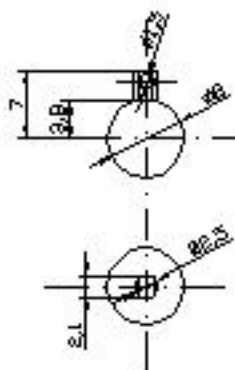


mit Kabel verkleben

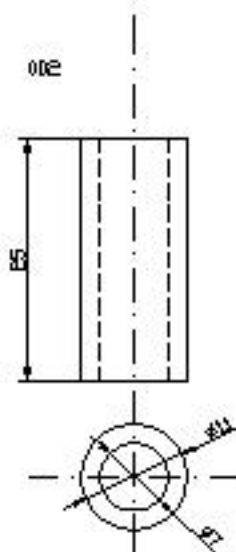


Des. Nr.	Teil Nr.	Teilbezeichnung
EE 05 2005	005 - 007	Gehtösegruppe
Material	Material	Projekt
Bl	Stahl Ng	Kantentaster

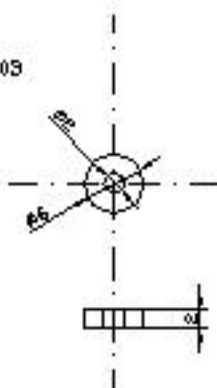
001



002



003



AußenØ erst nach Verkleben drehen

004



anpassen

Detail	Teil-Nr.	Teilbezeichnung
001 - 003	001 - 004	Tastergruppe
Material	Material	Projekt
Bl	Stahl, Ng	Kantentaster